

PICNIC PLACEMATS

Designed and created especially for Pfaff
by Kim Fillmore

GREAT FOR ANY MACHINE!

If you've ever had your paper plates blow away in a gust of wind, you'll LOVE our picnic placemats. The "leaves" at the base are just right to hold your lunch secure.



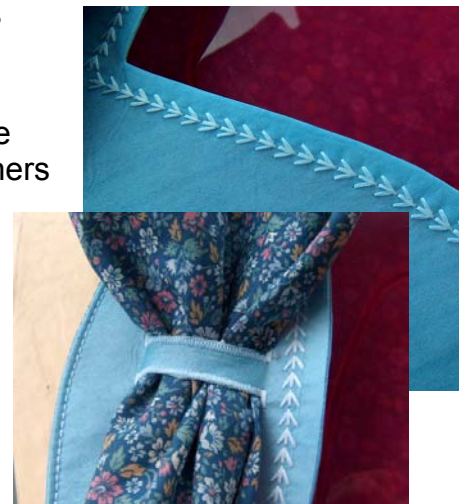
Supplies You'll Need:

- Pfaff sewing machine
- ½ yard floral print fabric for each placemat and napkin
- 1 – 15" x 15" contrast for each "leaves" base
- 1 – 15" x 22" craft stabilizer for each placemat and leaves base
- Sewing thread to match/coordinate (wind a matching bobbin)

Let's Get Started:

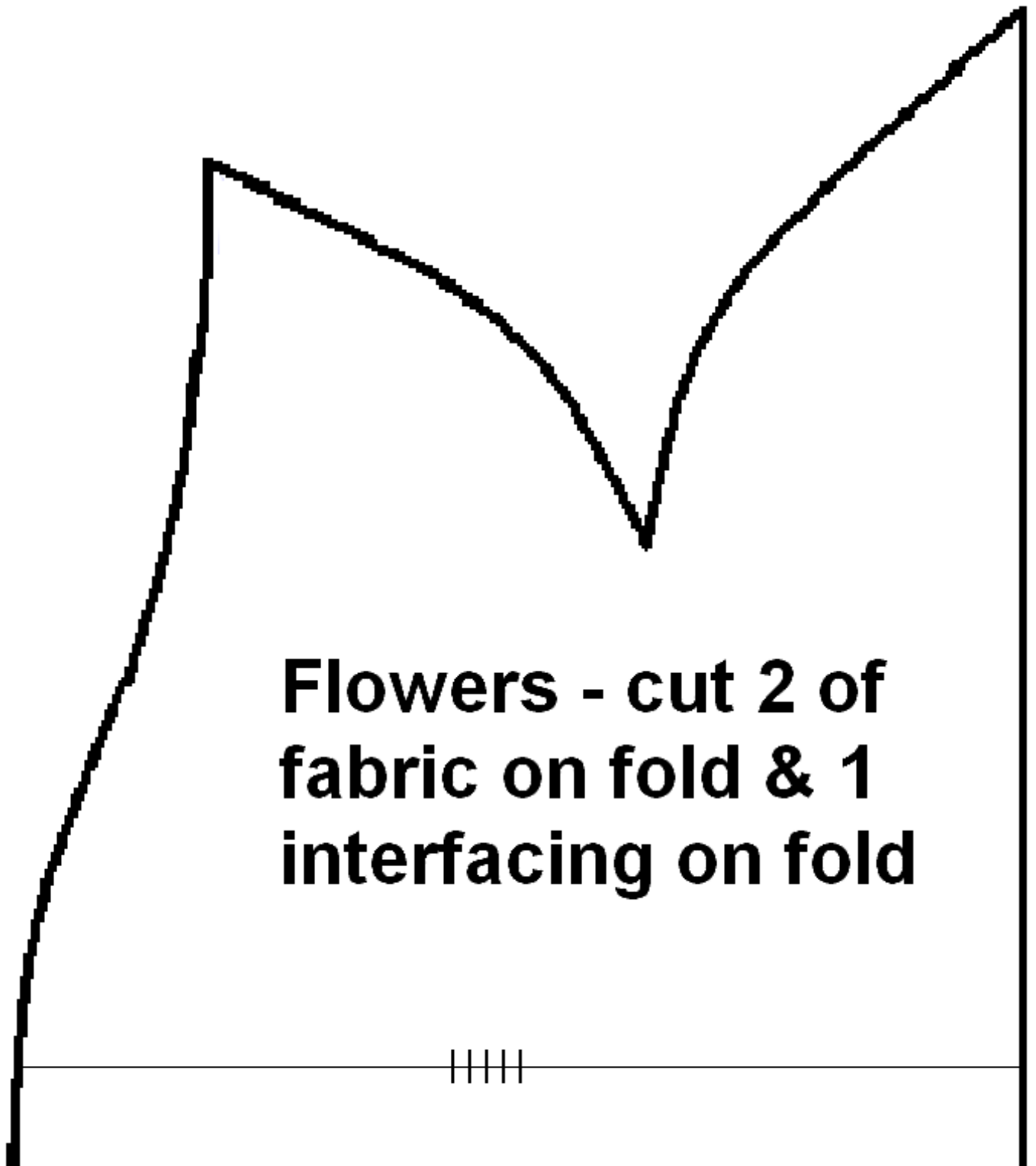
NOTE: Print pattern and overlap notched line to piece together.

1. From the complete tulip pattern cut 2 from floral print and 1 from stabilizer.
2. From the smaller base pattern cut 2 from contrast and 1 from stabilizer.
3. Fuse stabilizer to the back of one of the tulips and one of the base fabrics.
4. With wrong sides together, use a ¼" seam to sew the top edge of the base together. Leave the long curved bottom seam open. Clip corners and curves and turn. Press.
5. Topstitch along the top edge of the base using your favorite decorative stitch.
6. Sew 2 – 40mm buttonholes ½" apart on the left side of the leaves base. These will become the napkin holder.



7. Position the base on the interfacing-backed tulip. Place remaining tulip fabric face down on top of base/tulip.
8. Using a $\frac{1}{4}$ " seam allowance, sew around the outer edges of the tulip, making sure to catch the base securely in the seam. Leave an opening for turning.
9. Press to set seam. Clip curves and corners. Turn right side out. Press.
10. Press under opening raw edges.
11. Topstitch around entire outer edge (approx. $\frac{1}{8}$ " from edge).





**Flowers - cut 2 of
fabric on fold & 1
interfacing on fold**

