



# PFAFF

## cover | style

### Sewing instruction

#### **Material:**

- Black jersey fabric, 75 cm.
- Simple pattern for sleeveless top
- White 12 weight thread for flatlock
- White decorative embroidery thread for cover hem
- Cotton ribbon for the shoulders, 25 cm.
- Black invisible zipper, 25 cm
- Coverlock 4850

#### **Decorate the top**

Cut out the pattern of the top, cut the front piece bigger than it should be.

Thread the coverlock for flatlock wide, stitch nr 4. Sew the flatlock on the right side of the top, as shown on the pattern.

Cut out the front piece in the original size, back piece and the collar. Cut 1 cm seam allowance on all sides and 4 cm on the hem.

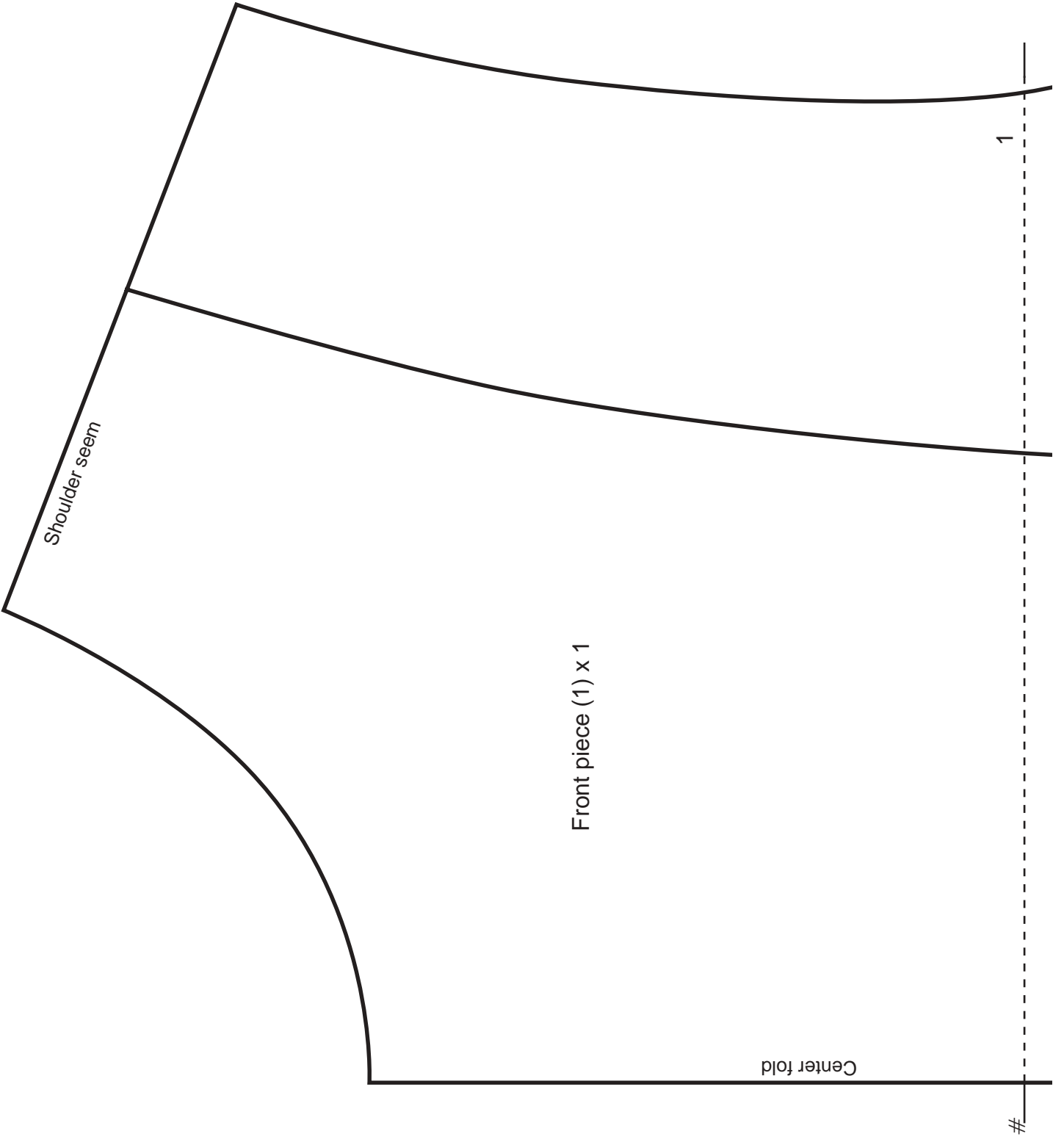
Sew the shoulder seams with 4 thread overlock; lay the cotton ribbons in the seams to prevent them from stretching.

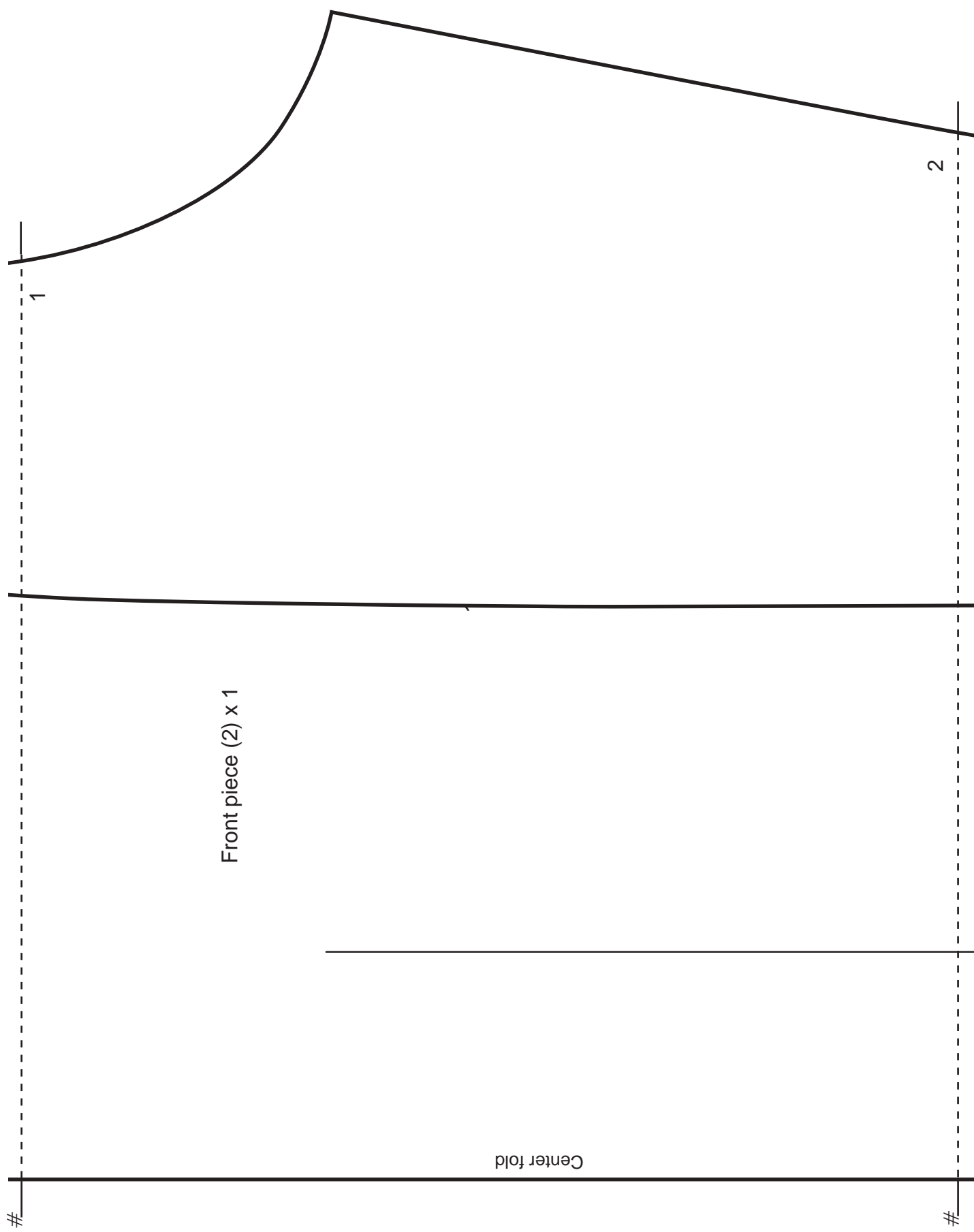
Cut strips width wise, to use as facing in the armholes. Overlock the strips in the armholes right sides together, turn it to the inside and iron on it.

Thread the coverlock for Cover hem wide stitch nr 2. Decorate the armholes with Cover hem from the wrong side.

Sew the collars side on the top, fold it so it will be double. Pin and sew the collar to the neckline. Insert the zipper in the back. So the sides on the top with 4-thread overlock.

Fold the hem of the top and sew with Cover stitch from the right side.





Front piece (2) x 1

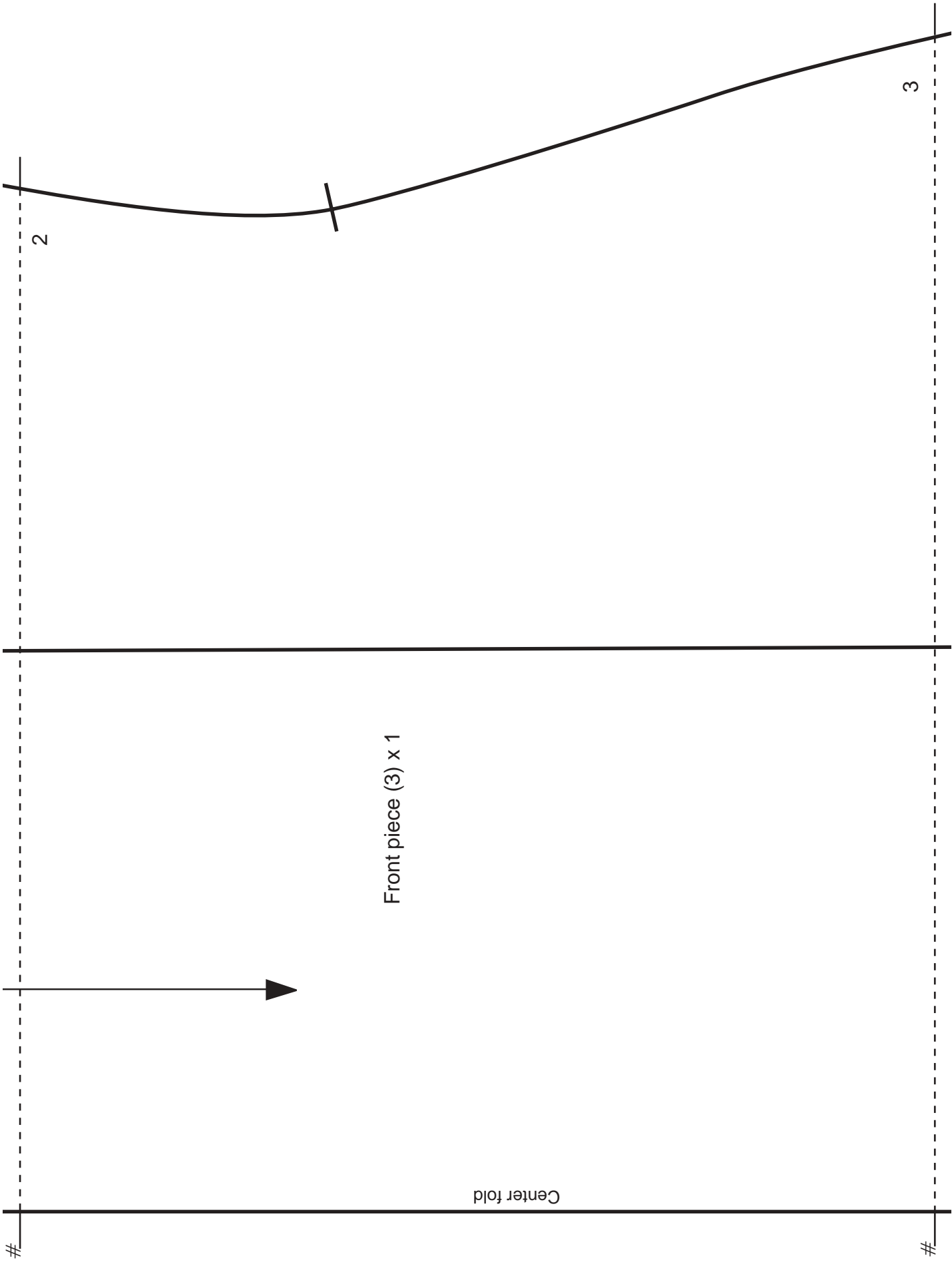
Center fold

1

2

#

#



Front piece (3) x 1

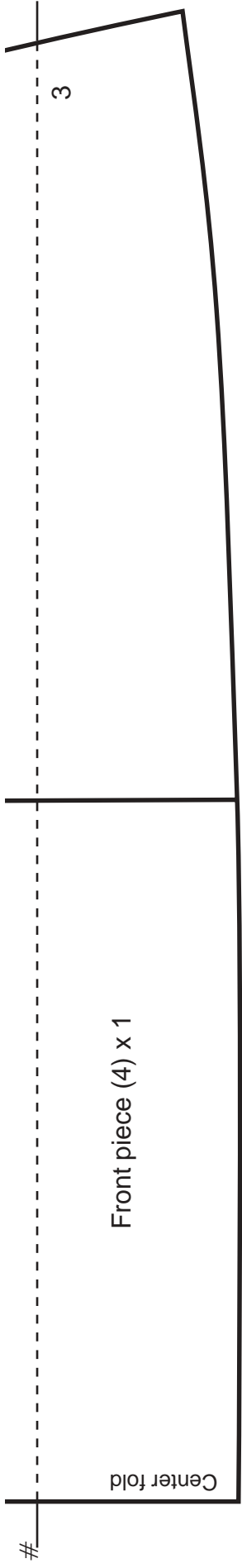
2

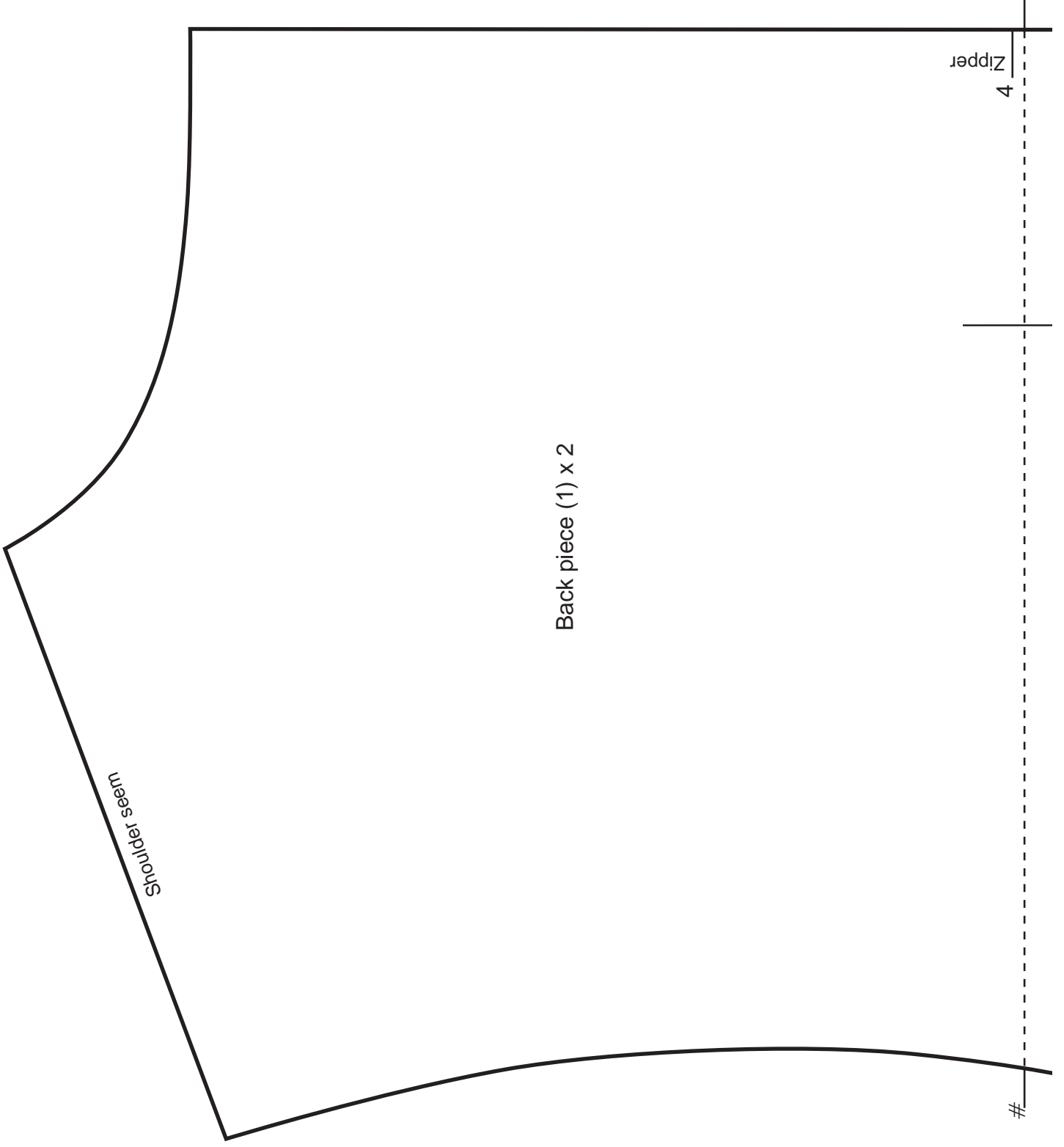
3

Center fold

#

#





Zipper

4

5

Back piece (2) x 2

#

#

